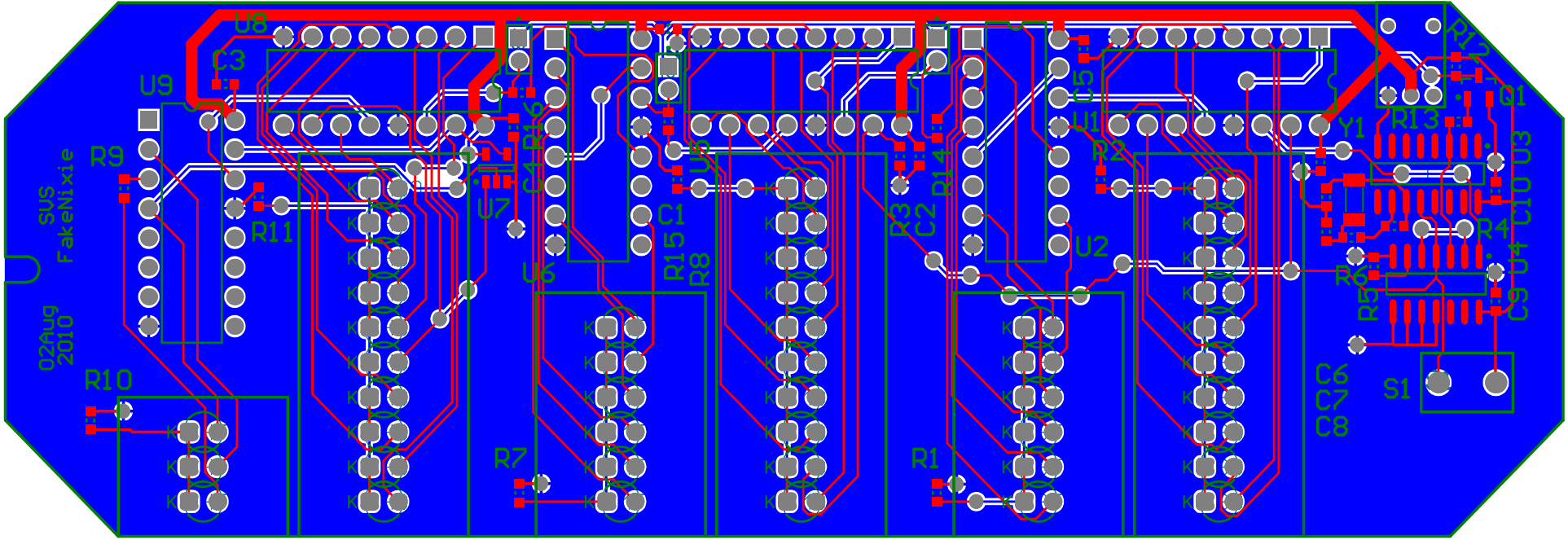


Title		
Size	Number	Revision
B		
Date:	8/2/2010	Sheet of
File:	E:\fake-nixie\clock_Sch.Doc	Drawn By:

02Aug
2010

SVS
FatehLxte



0200
60V/6A

S1

C9 U4 U10 U3 U2

Bill of Materials

<Parameter Title not found>

Source Data From: clock.PrjPcb
 Project: clock.PrjPcb
 Variant: None

Creation Date: 8/2/2010 10:24:28 AM
 Print Date: 40392 40392.4337

Footprint	Comment	LibRef	Designator	Description	Quantity
0603	100nF	4198985	C1, C2, C3, C4, C5, C6, C9, C10	=PartDescription	8
0603	10pF	1100044	C7, C8	=PartDescription	2
LED_T1	Red	1290032	DHO0, DHO1, DHO2, DHO3, DHO4, DHO5, DHO6, DHO7, DHO8, DHO9, DHT0, DHT1, DHT2, DMO0, DMO1, DMO2, DMO3, DMO4, DMO5, DMO6, DMO7, DMO8, DMO9, DMT0, DMT1, DMT2, DMT3, DMT4, DMT5, DSO0, DSO1, DSO2, DSO3, DSO4, DSO5, DSO6, DSO7, DSO8, DSO9, DST0, DST1, DST2, DST3, DST4, DST5	=PartDescription	45
HDR1X2M	Mill-Max 830-10-002-10-001000	1600007	J1, J2, J3	=PartDescription	3
PJ-040DH	PJ-040DH	PJ-040DH	J4		1
SOT95P240X110_3N	MMBT3904	1500017	Q1	=PartDescription	1
0603	84.5	1090134	R1, R2, R7, R8, R10, R11	=PartDescription	6
0603	10.0K	1000093	R3, R5, R12, R14, R15, R16	=PartDescription	6
0603	15.0 Meg	1000123	R4	=PartDescription	1
0603	330k	1090035	R6	=PartDescription	1
0603	0.0 Ohm	1000076	R9	=PartDescription	1
0603	1.00K	1000079	R13	=PartDescription	1
EP11SD1CB E	C&K EP11SD1CBE	1700021	S1	=PartDescription	1
N16E	CD4017BCN	CD4017BCN	U1, U2, U5, U6, U8, U9	Decade Counter/Divider with 10 Decoded Outputs	6
M16A_N	CD4060BCM	CD4060BCM	U3	14-Stage Ripple Carry Binary Counter	1
M14A_N	CD4013BCM	CD4013BCM	U4	Dual D-Type Flip-Flop	1
SOT95P280X145_5N	SN74LVC1G08 DBVR	1430086	U7	=PartDescription	1
CC5	32.768KHz	1310005	Y1	=PartDescription	1
					87

Approved	Notes